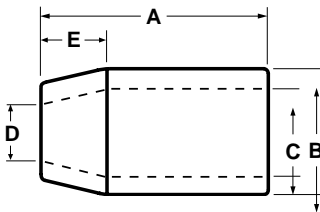


Swage Sleeves



Manufactured in Taiwan by Wirop
"Zero Defects, Striving To Be The Best"

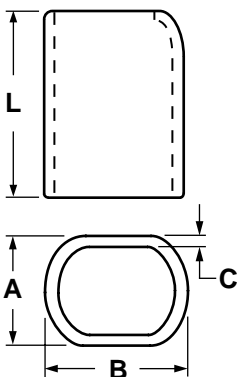
Carbon Flemish Sleeves Zinc Plated



Wire Rope Size (in)	Weight 100 pcs (lbs)	Dimension (inch)					Max. After Swage Dimensions (inch)
		A	B	D	E	C	
1/4"	5	1.00	0.66	0.31	0.28	0.47	0.57
5/16"	14	1.50	0.91	0.38	0.44	0.62	0.75
3/8"	14	1.50	0.91	0.47	0.39	0.66	0.70
7/16"	33	2.00	1.22	0.53	0.65	0.85	1.01
1/2"	29	2.00	1.22	0.63	0.56	0.91	1.01
9/16"	64	2.75	1.47	0.70	0.63	1.09	1.24
5/8"	57	2.75	1.47	0.75	0.63	1.09	1.24
3/4"	88	3.19	1.72	0.91	0.84	1.28	1.46
7/8"	132	3.56	2.03	1.00	1.03	1.53	1.68
1"	196	4.00	2.28	1.16	1.13	1.72	1.93
1-1/8"	260	4.81	2.50	1.28	1.25	1.94	2.13
1-1/4"	354	5.19	2.78	1.44	1.41	2.16	2.32
1-3/8"	422	5.81	3.00	1.56	1.56	2.38	2.52
1-1/2"	500	6.25	3.25	1.69	1.69	2.63	2.71
1-3/4"	805	7.25	3.84	1.94	1.97	3.13	3.1
2"	1,131	8.50	4.38	2.25	2.25	3.63	3.56

- All sleeves stamped with batch identification for easy traceability
- Carbon Duplex Sleeves available

SS Duplex Sleeves



Wire Rope Size (in)	Weight 100 pcs (lbs)	Dimensions (in)				Max. after swage Dimensions (inch)
		L	A	B	C	
1/4"	4	1.01	.486	.73	.082	.53
5/16"	15	1.395	.733	1.105	.156	.76
3/8"	18	1.74	.811	1.13	.157	.76
7/16"	38	2.02	1.04	1.40	.257	1.01
1/2"	31	1.99	.960	1.44	.177	1.01
9/16"	58	2.24	1.22	1.72	.248	1.27
5/8"	59	2.37	1.23	1.81	.224	1.27
3/4"	99	3.04	1.44	2.08	.240	1.53
7/8"	140	3.27	1.63	2.46	.299	1.76
1"	215	3.35	1.86	2.84	.335	2.04

Steel swage sleeves are recommended to be used with 6X19 and 6X37 class IPS, EIPS, FC or IWRC wire rope. If using any other type of construction or grade of wire rope, it is recommended to make a breaking load test of the swaged termination to prove the adequacy of the assembly to be manufactured.